

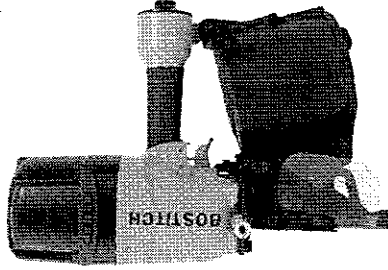
**ACCESSORIES AVAILABLE
ACCESORIOS DISPONIBLES
ACCESSOIRES DISPONIBLES**

- BC601 4 oz. Bostitch Air -Tool Lubricant
- BC602 1 pint Bostitch Air -Tool Lubricant
- BC603 1 pint Bostitch "Winter-Formula" Air-Tool Lubricant
- BC604 1 quart Bostitch Air -Tool Lubricant
- 851385 Loctite Grade 242 (.02 oz.)

BOSTITCH®

N512C

**COIL-FED PNEUMATIC NAILER
CLAVADORA NEUMÁTICA ALIMENTADA POR ROLLO
CLOUEUR PNEUMATIQUE À ENROULEMENT**



**TOOL PARTS ILLUSTRATION
ILUSTRACION DE LAS PIEZAS DE LA HERRAMIENTA
ILLUSTRATION DES PIÈCES D'OUTILLAGE**

⚠ WARNING:

BEFORE PERFORMING REPAIRS ON THIS TOOL, ALL OPERATORS SHOULD STUDY THIS ILLUSTRATION, AS WELL AS THE PARTS LIST AND OPERATION AND MAINTENANCE MANUAL. OPERATORS SHOULD UNDERSTAND AND FOLLOW ALL SAFETY WARNINGS AND INSTRUCTIONS. KEEP THIS ILLUSTRATION WITH THE TOOL FOR FUTURE REFERENCE. IF YOU HAVE ANY QUESTIONS, CONTACT YOUR BOSTITCH REPRESENTATIVE OR DISTRIBUTOR.

⚠ ADVERTENCIA:

ANTES DE LLEVAR A CABO CUALQUIER REPARACIÓN EN LA HERRAMIENTA, TODOS LOS OPERARIOS DEBERÁN ESTUDIAR ESTA ILLUSTRACION, ASI COMO LA LISTA DE PIEZAS Y EL MANUAL DE OPERACION Y MANTENIMIENTO. LOS OPERARIOS DEBERAN ENTENDER Y SEGUIR TODAS LAS ADVERTENCIAS E INSTRUCCIONES DE SEGURIDAD. CONSERVE ESTA ILLUSTRACION CON LA HERRAMIENTA PARA PODER CONSULTARLA EN LO FUTURO. SI TUVIERA ALGUNA PREGUNTA, PONGASE EN CONTACTO CON SU REPRESENTANTE O DISTRIBUIDOR DE BOSTITCH.

AVANT DE PROCÉDER À LA RÉPARATION DE CET OUTIL, LES OPÉRATEURS DOIVENT ÉTUDIER LA PRÉSENTE ILLUSTRATION AINSI QUE LA LISTE DE PIÈCES ET LE MANUEL D'INSTRUCTIONS ET D'ENTRETIEN. ILS DOIVENT ÉGALEMENT COMPRENDRE ET OBSERVER LES CONSIGNES DE SÉCURITÉ ET LES INSTRUCTIONS. CONSERVER CETTE ILLUSTRATION AVEC L'OUTIL POUR RÉFÉRENCE FUTURE. SI VOUS AVEZ DES QUESTIONS, COMMUNIQUEZ AVEC VOTRE REPRÉSENTANT OU VOTRE DISTRIBUTEUR DE BOSTITCH.

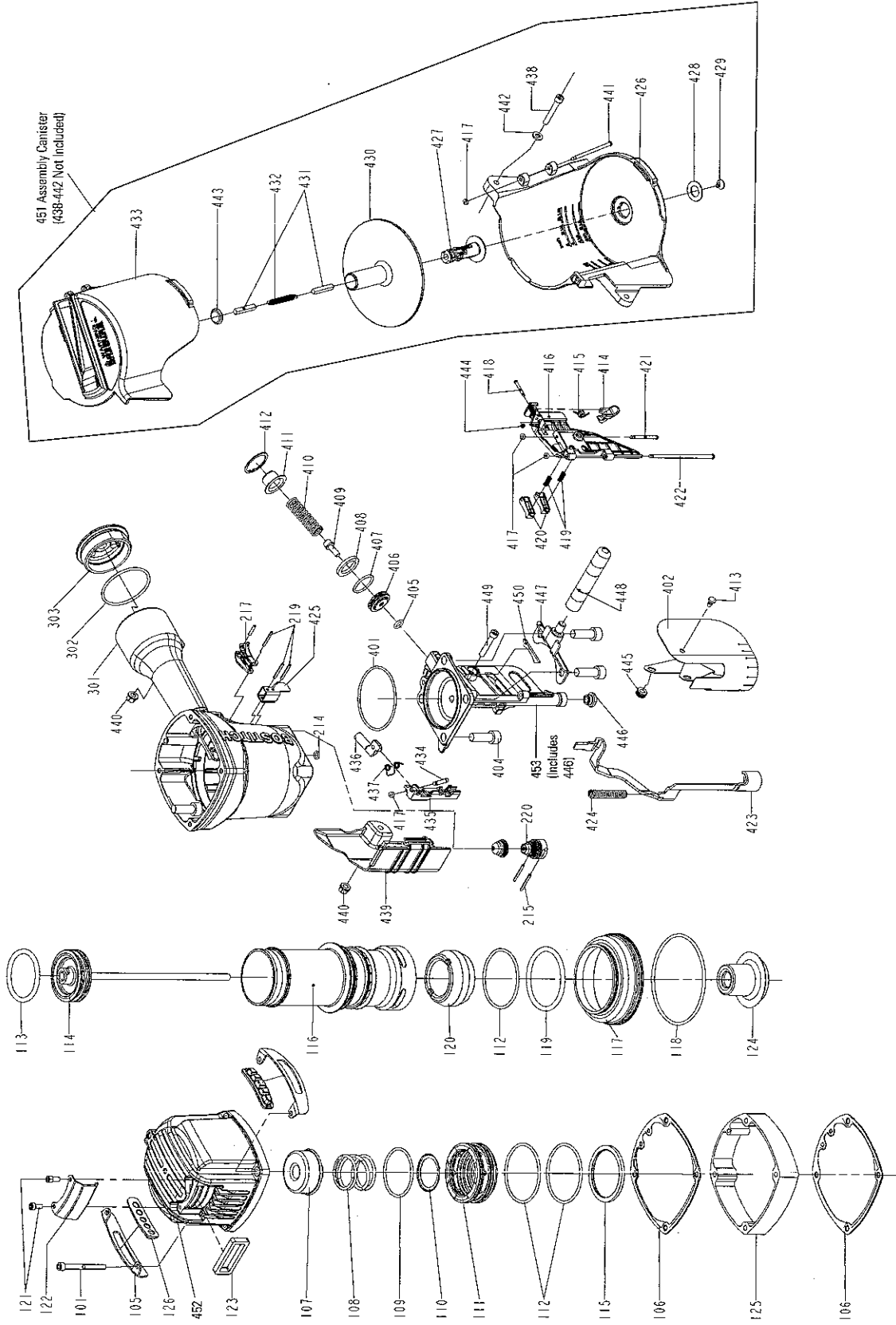
BOSTITCH®

IP1239-1REVA 3/06

Stanley Fastening Systems L.P.

N512C

COIL-FED PNEUMATIC NAILER CLAVADORA NEUMÁTICA ALIMENTADA POR ROLLO CLOUEUR PNEUMATIQUE À ENROULEMENT



See reverse side for available accessories (not included)

IP1239-1REVA 3/06
TO BE USED WITH PARTS LIST IP1239-2 AND OPERATION AND MAINTENANCE MANUAL 171119

BOSTITCH

N512C		Parts List: IP1239-2REVC			
		To be Used with tool parts illustration: IP1239-1REVA			
		and operation and maintenance manual: 171344			
		Serial Number on the Tool: N512C 6 150 000 and Higher			
ITEM	PART #	DESCRIPTION	ITEM	PART #	DESCRIPTION
101	2040101-04161	HEX.SOC.HD.BOLT	401	2041104-08020	O-RING
			402	11383-1110001	MUZZLE PROTECTOR
			404	MSC10150-30	SCREW, SHCS M10X1.50X30 LG.
105	11397-1034702	GUIDE, COVER	405	2041100-01091	O-RING
106	11302-1034701	CYLINDER CAP SEAL	406	N80128	PISTON, FEED
107	11370-1030001	SEAL	407	851384	O-RING, .987 X .103
108	11360-1030001	COMPRESSION SPRING	408	N80123	BUMPER, FEED PISTON
109	2041108-06050	O-RING	409	2040100-04080	BOLT ASSY
110	11381-1030001	WASHER	410	N80122	SPRING, COMPRESSION
111	11368-1030001	HD VALVE PISTON	411	N80124	COVER, FEED PISTON
112	2041108-07050	O-RING	412	2040300-08010	C- RING
113	2041100-06011	O-RING	413	1134B-0864701	DUST SHIELD PLUG
114	11204-1110001	ASSEMBLY, PISTON/DRIVER	414	11310-0254702	DOOR LATCH
115	11399-1030001	COLLAR	415	11311-1030001	LATCH SPRING
116	11320-1110001	CYLINDER	416	11361-1114701	DOOR
117	11321-1110001	CYLINDER SPACER	417	854004	WASHER, RUBBER-7
118	2041104-11010	O-RING	418	1131K-1034701	PIN
119	2041108-07060	O-RING	419	854011	SPRING-3109, COMPRESSION
120	11327-1034702	BUMPER-A	420	11358-1114701	NAIL STOP
121	MSC5080-12	SCREW, SHCS, M5X0.8X12 LG.	421	11359-1114701	PIN-NAIL STOP
122	11371-1034701	DEFLECTOR	422	11362-1034701	DOOR SHAFT PIN
123	1132T-1110001	MUFFLER	423	11330-1114701	SAFETY
124	11327-1034703	BUMPER-B	424	11337-1030001	SAFETY SPRING
125	1130E-1114301	SPACER, CAP	425	N70145	GUIDE ARM
126	1135R-1034701	PROTECTIVE CUSHION	426	11354-1114701	PLATFORM, CANISTER
214	2041100-01050	O-RING	427	11357-1034701	MAGAZINE POST
215	2040400-05150	SPRING PIN	428	1138Y-0954701	RUBBER RING
			429	1134M-0864701	SPRING BASE
217	SEQ6	KIT, SEQUENTIAL	430	11356-1114701	CANISTER PLATFORM
			431	1138W-0860001	SPACER
219	102549	PIN,SPECIAL SPIRAL	432	11328-1114701	PULL SPRING
220	TVA6	KIT, TRIGGER VALVE	433	11355-1114701	CANISTER COVER
			434	11365-0864701	PIN FEED PISTON
			435	11306-1114701	FEED FINGER
			436	N80121	ROD, FEED PISTON
301	11230-1038001	FRAME	437	N80120	SPRING, TORSION
302	MRG049431	O-RING	438	MSC6100-40	SCREW, SOC. HD. CAP M6X1.00X40 LG.
303	N70167	END CAP	439	1134R-1114701	SPRING COVER
			440	2040501-04010	BOLT CAP
			441	1136R-1034701	MAGAZINE SHAFT PIN
			442	2040202-04010	FLAT WASHER
			443	1134N-1014701	SPRING BASE A
			444	1131D-0460001	URETHANE RETAINER
			445	1135U-1010001	PROTECTOR WASHER
			446	103559	BUSHING, WEAR
			447	1139G-1034701	SECOND HANDLE BASE
			448	1137K-1030001	HANDLE
			449	MSC6100-35	SCREW, SHCS M6X1.00X35 LG
			450	1135G-1114701	RUBBER PAD
			451	7USSB-3111003	ASSEMBLY, CANISTER
			452	7USSB-3111001	ASSEMBLY, CAP
			453	7USSB-3111002	ASSEMBLY, NOSE