

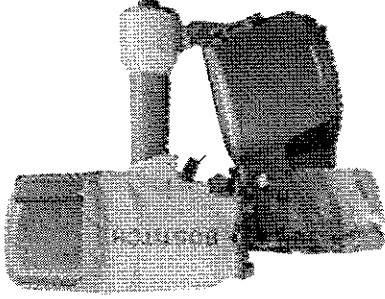
**ACCESSORIES AVAILABLE
ACCESORIOS DISPONIBLES
ACCESSOIRES DISPONIBLES**

- BC601 4 oz. Bostitch Air - Tool Lubricant
- BC602 1 pint Bostitch Air - Tool Lubricant
- BC603 1 pint Bostitch "Winter-Formula" Air-Tool Lubricant
- BC604 1 quart Bostitch Air - Tool Lubricant
- 851385 Loctite Grade 242 (.02 oz.)

BOSTITCH®

N401C-1

**COIL-FED PNEUMATIC NAILER
CLAVADORA NEUMÁTICA ALIMENTADA POR ROLLO
CLOUEUR PNEUMATIQUE À ENROULEMENT**



**TOOL PARTS ILLUSTRATION
ILUSTRACIÓN DE LAS PIEZAS DE LA HERRAMIENTA
ILLUSTRATION DES PIÈCES D'OUTILLAGE**

⚠ WARNING:

BEFORE PERFORMING REPAIRS ON THIS TOOL, ALL OPERATORS SHOULD STUDY THIS ILLUSTRATION, AS WELL AS THE PARTS LIST AND OPERATION AND MAINTENANCE MANUAL. OPERATORS SHOULD UNDERSTAND AND FOLLOW ALL SAFETY WARNINGS AND INSTRUCTIONS. KEEP THIS ILLUSTRATION WITH THE TOOL FOR FUTURE REFERENCE. IF YOU HAVE ANY QUESTIONS, CONTACT YOUR BOSTITCH REPRESENTATIVE OR DISTRIBUTOR.

⚠ ADVERTENCIA:

ANTES DE LLEVAR A CABO CUALQUIER REPARACIÓN EN LA HERRAMIENTA, TODOS LOS OPERARIOS DEBERÁN ESTUDIAR ESTA ILLUSTRACIÓN, ASÍ COMO LA LISTA DE PIEZAS Y EL MANUAL DE OPERACIÓN Y MANTENIMIENTO. LOS OPERARIOS DEBERÁN ENTENDER Y SEGUIR TODAS LAS ADVERTENCIAS E INSTRUCCIONES DE SEGURIDAD. CONSERVE ESTA ILLUSTRACIÓN CON LA HERRAMIENTA PARA PODER CONSULTARLA EN LO FUTURO. SI TUVIERA ALGUNA PREGUNTA, PÓNGASE EN CONTACTO CON SU REPRESENTANTE O DISTRIBUIDOR DE BOSTITCH.

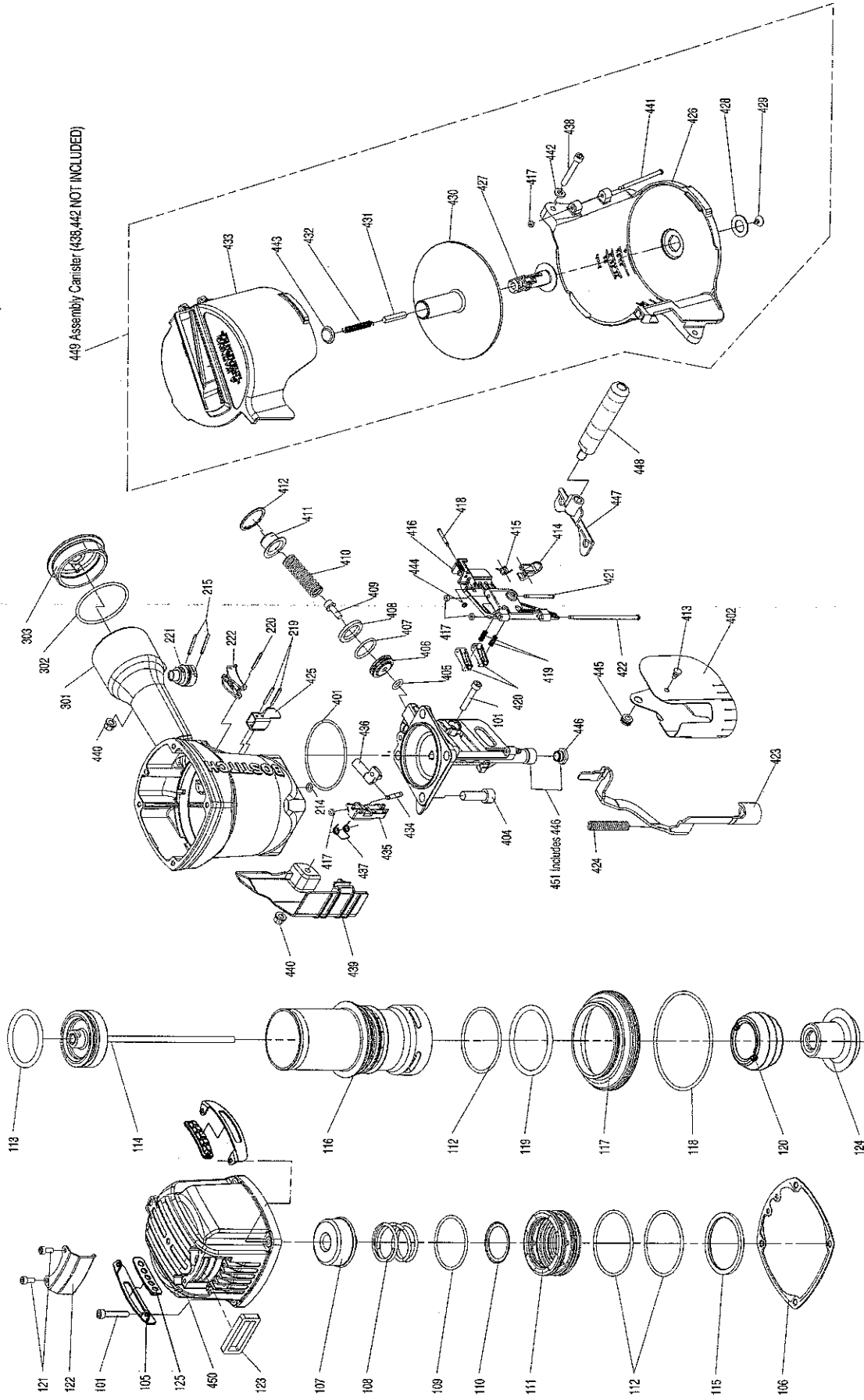
AVANT DE PROCÉDER À LA RÉPARATION DE CET OUTIL, LES OPÉRATEURS DOIVENT ÉTUDIER LA PRÉSENTE ILLUSTRATION AINSI QUE LA LISTE DE PIÈCES ET LE MANUEL D'INSTRUCTIONS ET D'ENTRETIEN ; ILS DOIVENT ÉGALEMENT COMPRENDRE ET OBSERVER LES CONSIGNES DE SÉCURITÉ ET LES INSTRUCTIONS. CONSERVER CETTE ILLUSTRATION AVEC L'OUTIL POUR RÉFÉRENCE FUTURE. SI VOUS AVEZ DES QUESTIONS, COMMUNIQUEZ AVEC VOTRE REPRESENTANT OU VOTRE DISTRIBUTEUR DE BOSTITCH.

IP 1223-1REV B 8/05

BOSTITCH®
Stanley Fastening Systems L.P.

N401C-1

**COIL-FED PNEUMATIC NAILER
CLAVADORA NEUMÁTICA ALIMENTADA POR ROLLO
CLOUEUR PNEUMATIQUE À ENROULEMENT**



See reverse side for available accessories (not included)

IP1223-1REVB 8/05
TO BE USED WITH PARTS LIST IP1223-2 AND OPERATION AND MAINTENANCE MANUAL 171119

BOSTITCH

| N401C-1 | | Parts List: IP1223-2REVB | | | |
|-------------------------------------------------|---------------|-----------------------------------|------|-------------------------------|------------------------------------|
| | | | | | |
| To be Used with tool parts illustration: | | IP1223-1REVB | | | |
| and operation and maintenance manual: | | 171119 | | | |
| | | Serial Number on the Tool: | | N401C-1 000 and Higher | |
| ITEM | PART # | DESCRIPTION | ITEM | PART # | DESCRIPTION |
| 101 | MSC6100-35 | SCREW, SHCS, M6X1.00X35 LG. | 401 | 2041104-08020 | O-RING |
| | | | 402 | 11383-1030001 | MUZZLE PROTECTOR |
| | | | 404 | MSC10150-30 | SCREW, SHCS M10X1.50X30 LG. |
| 105 | 11397-1034702 | GUIDE, COVER | 405 | 2041100-01091 | O-RING |
| 106 | 11302-1034701 | CYLINDER CAP SEAL | 406 | N80128 | PISTON, FEED |
| 107 | 11370-1030001 | SEAL | 407 | 851384 | O-RING, .987 X .103 |
| 108 | 11360-1030001 | COMPRESSION SPRING | 408 | N80123 | BUMPER, FEED PISTON |
| 109 | 2041108-06050 | O-RING | 409 | 2040100-04080 | BOLT ASSY |
| 110 | 11381-1030001 | WASHER | 410 | N80122 | SPRING, COMPRESSION |
| 111 | 11368-1030001 | HD VALVE PISTON | 411 | N80124 | COVER, FEED PISTON |
| 112 | 2041108-07050 | O-RING | 412 | 2040300-08010 | C- RING |
| 113 | 2041100-06011 | O-RING | 413 | 1134B-0864701 | DUST SHIELD PLUG |
| 114 | 11204-1030002 | ASSEMBLY, PISTON/DRIVER | 414 | 11310-0254702 | DOOR LATCH |
| 115 | 11399-1030001 | COLLAR | 415 | 11311-1030001 | LATCH SPRING |
| 116 | 11320-1030002 | CYLINDER | 416 | 11361-1034701 | DOOR |
| 117 | 11321-1030001 | CYLINDER SPACER | 417 | 854004 | WASHER, RUBBER-7 |
| 118 | 2041104-11010 | O-RING | 418 | 1131K-1034701 | PIN |
| 119 | 2041108-07060 | O-RING | 419 | 854011 | SPRING-3109, COMPRESSION |
| 120 | 11327-1034702 | BUMPER-A | 420 | N70149 | PAWL, CHECK |
| 121 | MSC5080-12 | SCREW, SHCS, M5X0.8X12 LG. | 421 | 11359-1034701 | PIN-NAIL STOP |
| 122 | 11371-1034701 | DEFLECTOR | 422 | 11362-1034701 | DOOR SPRING PIN |
| 123 | 1132T-1030001 | MUFFLER | 423 | 11330-1034701 | SAFETY |
| 124 | 11327-1034703 | BUMPER-B | 424 | 11337-1030001 | SAFETY SPRING |
| 125 | 1135R-1034701 | PROTECTIVE CUSHION | 425 | N70145 | GUIDE ARM |
| 214 | 2041100-01050 | O-RING | 426 | 11354-1034701 | PLATFORM, CANISTER |
| 215 | 2040400-05150 | SPRING PIN | 427 | 11357-1034701 | MAGAZINE POST |
| | | | 428 | 1138Y-0954701 | RUBBER RING |
| | | | 429 | 1134M-0864701 | SPRING BASE |
| | | | 430 | 11356-1034701 | CANISTER |
| 219 | 102549 | PIN,SPECIAL SPIRAL | 431 | 1138W-0860001 | SPACER |
| 220 | 2040404-05130 | SPRING PIN | 432 | 11328-0970001 | PULL SPRING |
| 221 | TVA6 | KIT, TRIGGER VALVE | 433 | 11355-1034701 | CANISTER COVER |
| 222 | N50082A | ASSEMBLY, TRIGGER | 434 | 11365-0864701 | PIN FEED PISTON |
| | | | 435 | 11306-1034702 | FEED FINGER |
| 301 | 11230-1038001 | FRAME | 436 | N80121 | ROD, FEED PISTON |
| 302 | MRG049431 | O-RING | 437 | N80120 | SPRING, TORSION |
| 303 | N70167 | END CAP | 438 | MSC6100-40 | SCREW, SOC. HD. CAP M6X1.00X40 LG. |
| | | | 439 | 1134R-1034701 | SPRING COVER |
| | | | 440 | 2040501-04010 | BOLT CAP |
| | | | 441 | 1136R-1034701 | MAGAZINE SHAFT PIN |
| | | | 442 | 2040202-04010 | FLAT WASHER |
| | | | 443 | 1134N-1014701 | SPRING BASE A |
| | | | 444 | 1131D-0460001 | URETHANE RETAINER |
| | | | 445 | 219USSB-10302 | LATCH SPRING BUSHING |
| | | | 446 | 103559 | BUSHING WEAR |
| | | | 447 | 1139G-1034701 | SECOND HANDLE BASE |
| | | | 448 | 1137K-1030001 | HANDLE |
| | | | 449 | 7BUSB-3103003 | ASSEMBLY, CANISTER |
| | | | 450 | 7BUSB-3103001 | ASSEMBLY, CAP |
| | | | 451 | 7BUSB-3103002 | ASSEMBLY, NOSE |